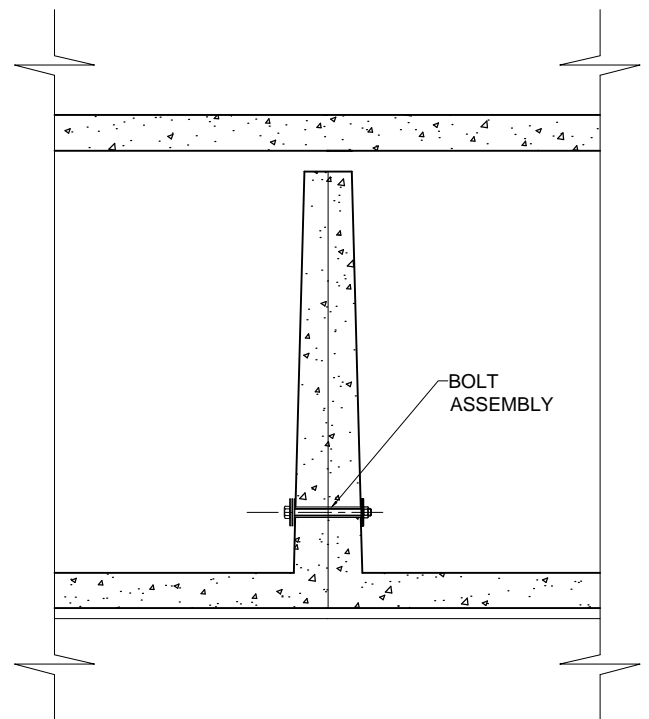
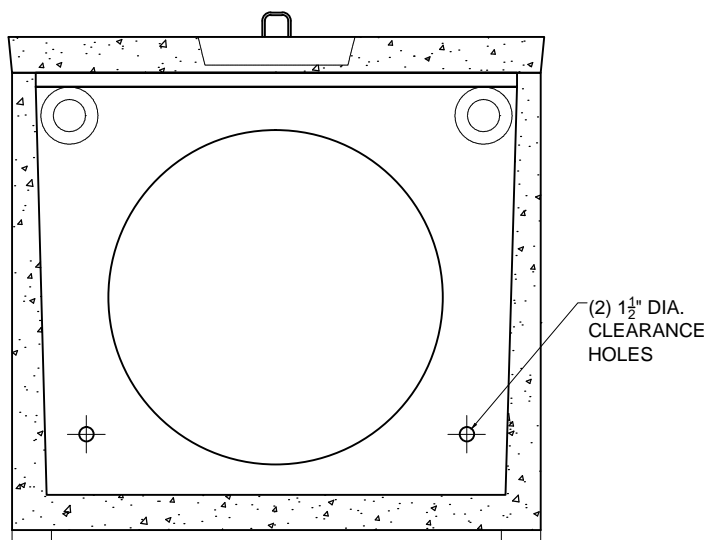




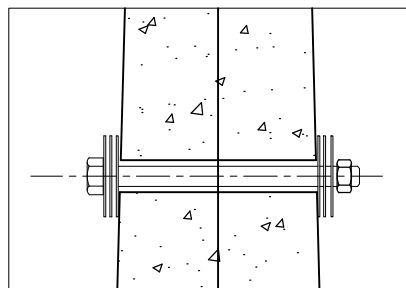
## SPECIFICATION SHEET NUMBER S-101

Precast units shall be placed with one-quarter inch minimum to one-half inch maximum space between units. This will provide a properly designed joint material volume to compensate for maximum expected movement. Joint sealant material shall consist of a two part, gun grade, polyurethane sealant which will cure to a 30 shore A+/-, elongation ability of 750%, tensile strength of 350 PSI and tear-resistance of 85 PSI. Material shall be applied per the manufacturer's recommendation.



POLYURETHANE U227 SHALL BE APPLIED A MINIMUM OF 3/16" THICK, EDGE TO EDGE, BETWEEN TANKS AND A MINIMUM OF 1/2" DEEP BETWEEN CASTINGS. MATERIAL SHALL ALSO BE USED TO MAINTAIN A MINIMUM OF 1/4" OVERCOAT OF THE BOLT ASSEMBLIES

EACH BOLT ASSEMBLY SHALL CONSIST OF (1) 1/2" DIA. X 11" LONG CADMIUM PLATED BOLT, (6) CADMIUM PLATED, 1/2" DIA. FENDER WASHERS, 1/2" DIA. FLAT WASHERS (AS REQUIRED FOR SPACING), AND (1) 1/2"-13 HEX NUT





## **SPECIFICATION SHEET NUMBER S-201**

### **MATERIAL SPECIFICATIONS:**

1. CONCRETE - Concrete shall have a minimum 28 day compressive strength of 4000 psi. The mix shall be so designed as to produce a minimum 24 hour strength of 1,250 psi. Test method shall conform to ASTM standard C-39. The concrete mix shall conform to the current edition of the following ASTM standards:

C 33 Concrete Aggregates  
C 94 Ready-mixed  
C 150 Portland Cement

C 260 Air entraining Admixtures  
C 494 Chemical Admixtures

Concrete shall contain a minimum of six sacks of Type II Portland Cement. Although strength and other requirement may be met with a lesser cement content due to the possibility of acidic nature of the contents and the desired watertight integrity, a cement mix is necessary.

2. STEEL REINFORCEMENT - Structural reinforcing shall consist of No. 5 & 6 Grade 60 bars, with secondary reinforcing No. 3 Grade 60 bar. Deformed reinforcing bar and fabricated mats shall conform to the current editions of the following ASTM standards.

A496 Steel wire, deformed, for concrete reinforcement.

A1064 Carbon-steel wire & welded wire reinforcement, plain & deformed, for concrete.

A615 Deformed and plain carbon-steel bars for concrete reinforcement.

A706 low-alloy steel deformed & plain bars for concrete reinforcement.

3. SECONDARY REINFORCEMENT - (Optionally used per manufacturer's discretion). Three dimensional secondary reinforcement shall be synthetic fiber. Fiber shall be so designed so as to increase early strength, compressive strength, impact resistance and reduce absorption. Rate of addition shall be per manufacturer's recommendations.

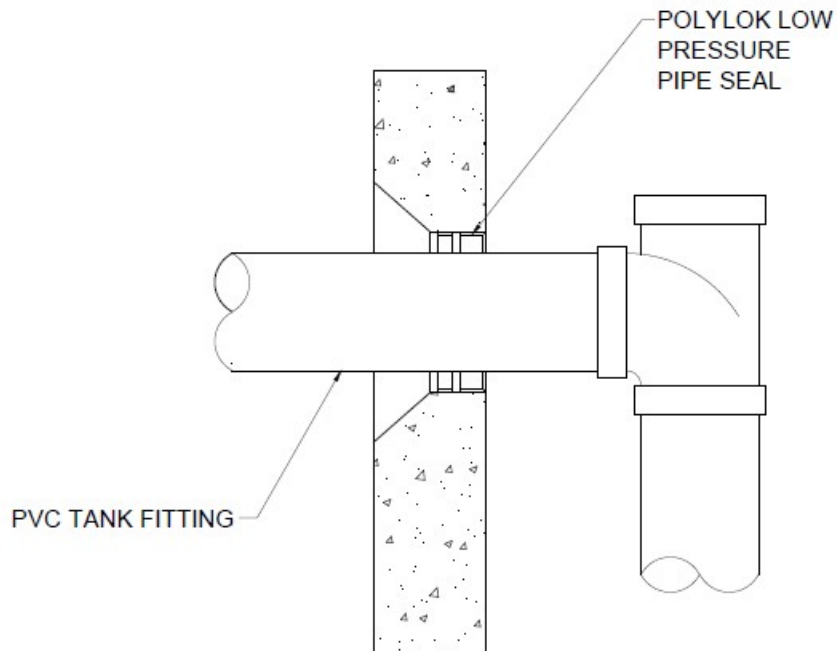
### **GENERAL NOTES:**

1. The assembly is designed for three foot earth cover based on undrained soil weight of 120 pounds per cubic foot, or a minimum of 360 psf.
2. Manhole extensions to grade are optionally available per Pro-Cast Products Drawing No. 1103.
3. Back vent opening through baffle wall shall consist of the open area upper most in the tank. The square inch opening shall run from 115 for the 750 through 1200 gallon size and 134 for the 1500.
4. Tank body to cap joint sealed with butyl rubber joint sealant to produce seal against passing ground water. Sealant shall conform to SS-S-210A and ASTM C 990.
5. Internal fittings are fabricated from four inch UPC listed PVC pipe and fittings conforming to ASTM D 2729, D 3034, and F 789. Pipe shall conform to ASTM D 2729.
6. Inlet and outlet fittings shall penetrate exterior walls through low pressure synthetic pipe seal. For additional information, see Pro-Cast Products Specification Sheet No. S-249.



**SPECIFICATION SHEET NUMBER S-249**

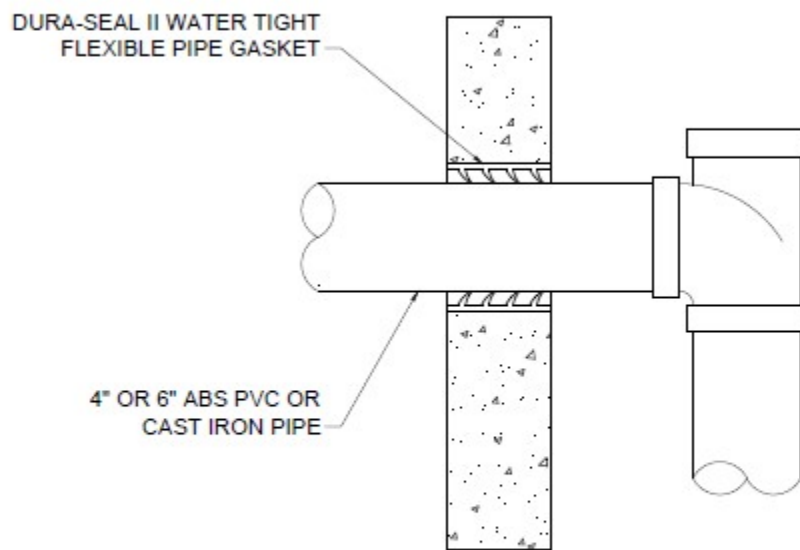
Pipe seal provided via Polylok brand - low pressure pipe seal. Seal will accommodate three or four inch SDR 35 and Schedule 40 pipe. Additional information contained in IAMPO file number 2832.



***PRO-CAST PRODUCTS, INC.***



**SPECIFICATION SHEET NUMBER S-250**



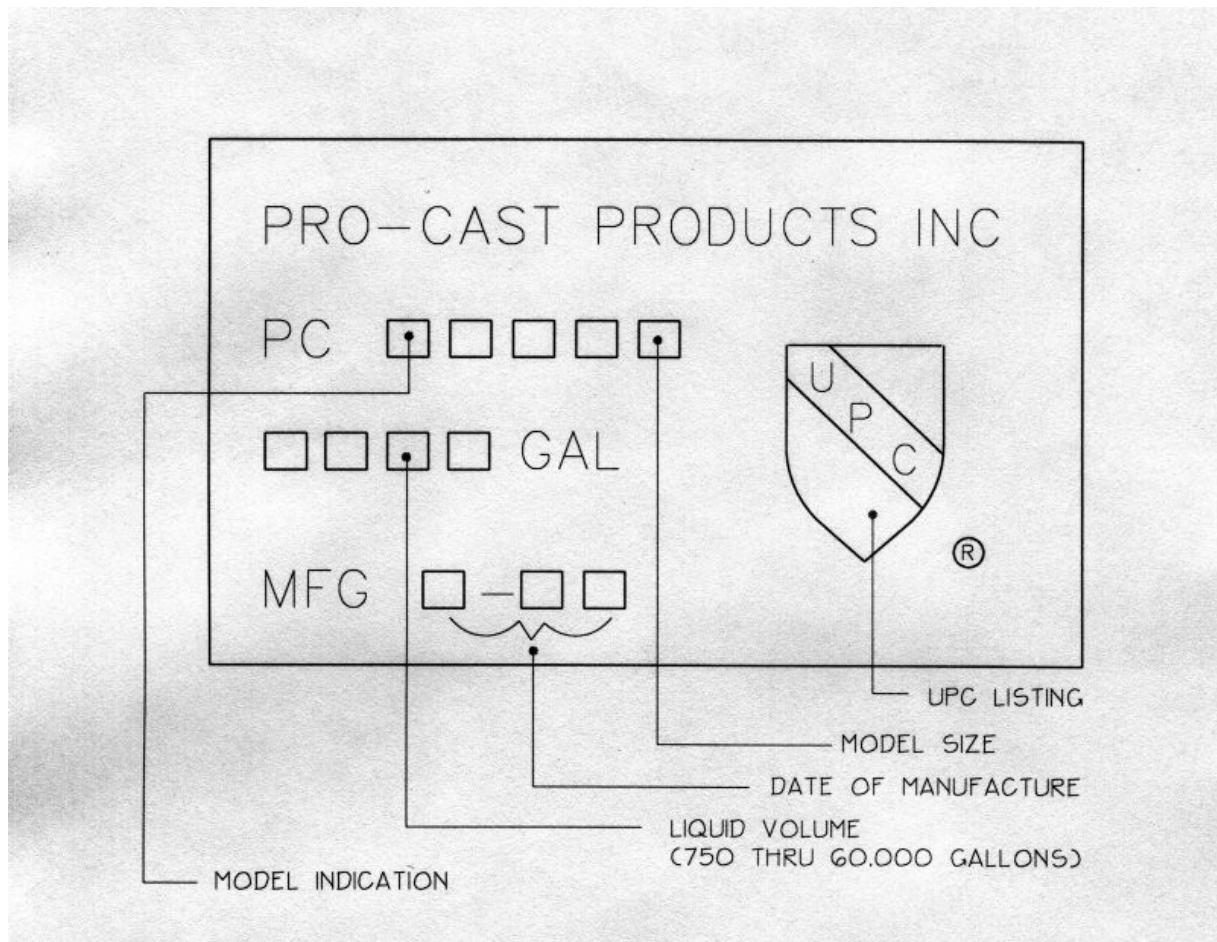
DURA-SEAL II MULTI FINNED FLEXIBLE GASKET FOR A POSITIVE  
WATER-TIGHT SEAL MEETS ASTM C443 AND ASTM C923

*PRO-CAST PRODUCTS INC.*



## SPECIFICATION SHEET NUMBER S-251

Imprint with identifying information related to the tank's size, age and intended purpose is located at the upper most portion of the left hand side of the inlet end of the tank body. The imprint is 9" x 6" with 1" lettering.



*PRO-CAST PRODUCTS INC.*



## **SPECIFICATION SHEET NUMBER S-252**

Imprint identifying maximum structural design is located on the left side of the inlet end of the tank top. Imprints are approximately 2" x 20" with 1" lettering. The description contained in the title block of the referring drawing will identify the appropriate imprint.

**250 PSF LOADING**

**3 FT EARTH COVER**

**8 FT EARTH COVER**

**H-20 TRAFFIC COVER**

*PRO-CAST PRODUCTS INC.*